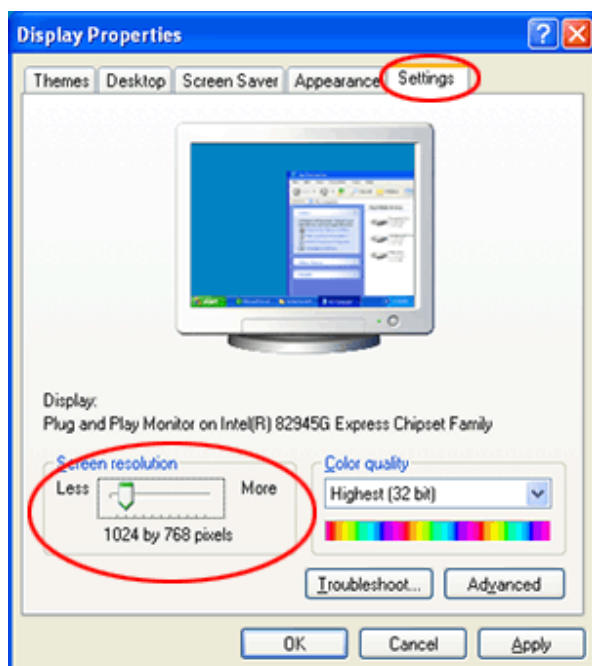


My module window appears to be 'cut-off'.



If your window looks like the one above your screen resolution may be set too low. You can fix this by following the steps below:

1. Click on **Start** -> **Control Panel** -> **Appearance and Themes** -> **Display**
OR if you are using Classic windows view
Click on **Start** -> **Control Panel** -> **Display**
2. Select the **Settings** tab
3. Drag the **Screen Resolution** slider to **at least 1024 by 768 pixels**



4. **Close** the module window, and **reopen** it.
The module window should now display correctly.

