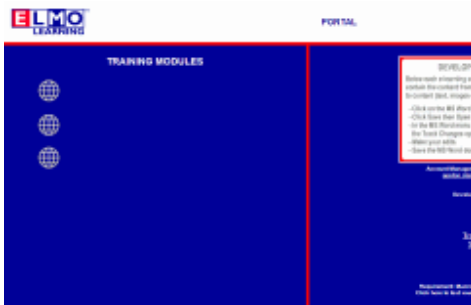


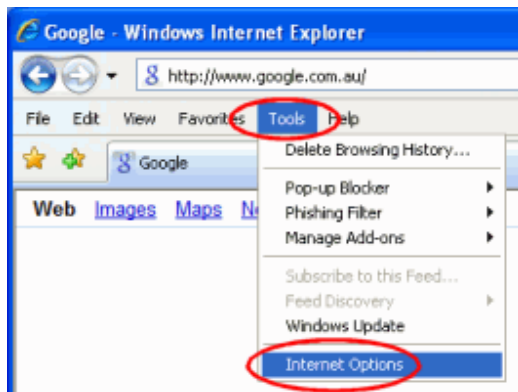
## Using Internet Explorer

If on the training portal there are no links to the training modules, or if a link to a module is opening a new blank window...

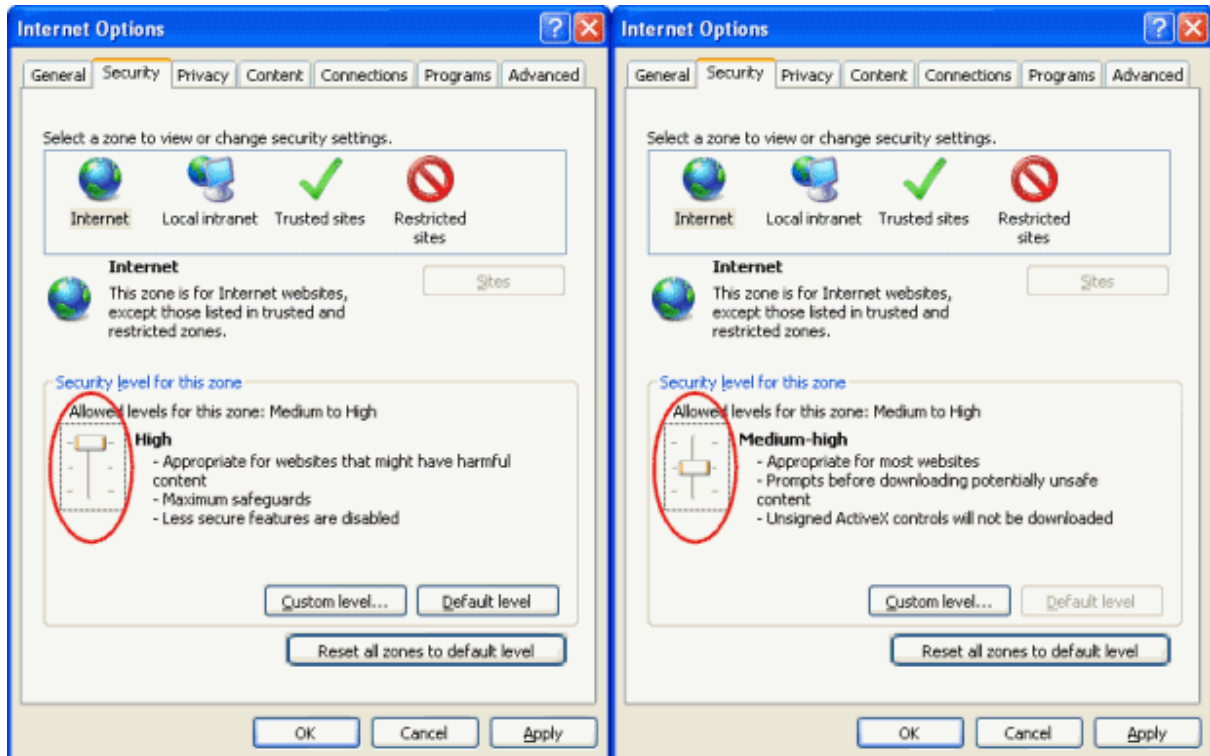


This can be due to the **browser security settings being set too high**. Follow these steps to configure your security settings.

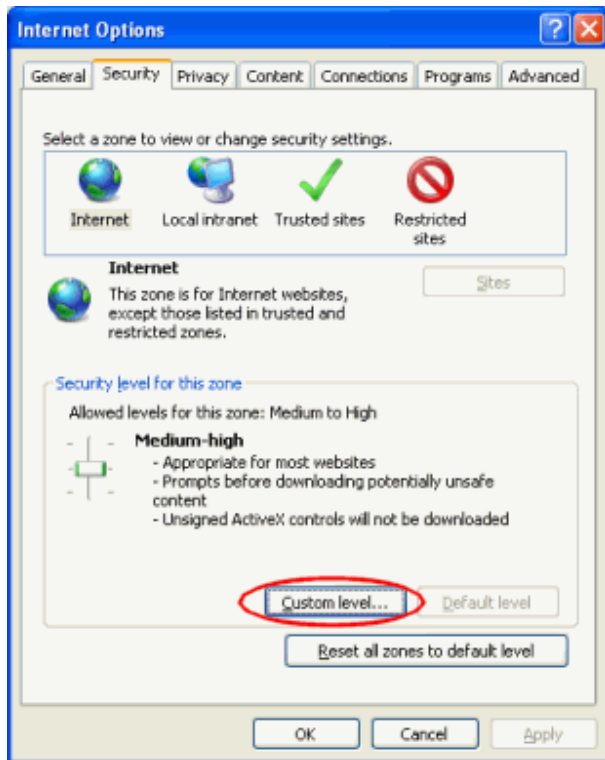
1. In Internet Explorer click on **Tools -> Internet options...**



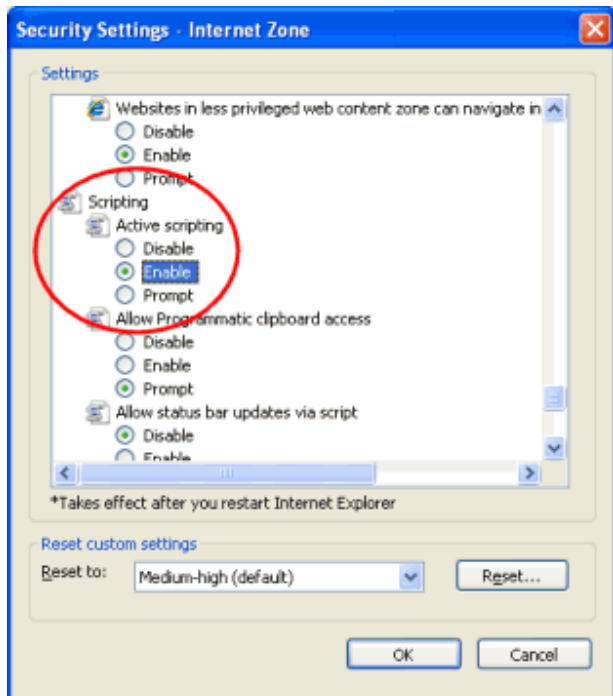
2. In the Security tab if the security level is set to high set it to any lower setting.



3. Click **OK** then **refresh** the webpage (This can be done by pressing the **F5 key**).
4. If you still cannot see links to modules go back into the security settings and click **Custom level...**



5. Scroll down to **Active scripting** and set it to **Enable** then click **OK**.



6. **Refresh** the webpage.